

IMMUNIZATION

Activities

Activities of PAHO office related to the Expanded Program of Immunization (EPI) which were undertaken, with support of headquarter (immunization unit), since the earthquake, are two folds:

1) Activities aiming at mitigating consequences of the earth quake (outbreak prevention)

- Support elaboration of a plan of vaccination post disaster which is addressing in a comprehensive fashion 1) potential risks of EPI preventable diseases resulting from the earthquake: measles/rubella outbreaks; extension/intensification of the underlying diphtheria outbreak; and tetanus; and 2) vitamine A and deworming drug distribution
- Support elaboration of the funding, supplies and equipment requirements of the plan of vaccination post disaster (rapid definition of requirements and missing inputs allowed purchasing the missing inputs without delaying the initiation of the activities)
- Elaboration of documents aiming at mobilizing funds for the Plan of vaccination post disaster (Flash appeal; ERF)
- Provision at PROMESS of anti tetanic immunoglobulin and tetanic vaccine (bivalent tetanus and diphtheria anatoxine/toxoid) to health facilities providing care to injured persons.
- Support elaboration of all the tools needed for the implementation of the phase 1 of the Plan of vaccination post disaster (vaccination in settlements sites), e.g. : data base and mapping of settlement sites; micro planning/budgeting application ; training modules ; management tools for vaccination teams and supervisors; information system forms; and monitoring bulletin
- Support planning of day to day extension of vaccination activities in settlements sites
- Support involvement of NGOs in the implementation of phase 1 of the plan (PAHO elicited the involvement of the NGOs through the health cluster; and the identification of settlements sites to be vaccinated by NGOs in coordination with the sites vaccinated by the MOH)
- Local purchase of supplies required by the phase 1 of the plan of vaccination post disaster, e.g.: training modules, vaccination cards and information systems forms.
- Support training of vaccination teams
- Distribution of vaccines, syringes and related inputs and cold chain equipments at/by PROMESS
- Provision of logistics for the distribution of vaccines/inputs/icepacks/equipments and for the supervision
- Participation to the supervision of vaccination teams
- Support data entry

- Support epidemiological surveillance of vaccine preventable diseases: participation to investigation of cases and response. Evaluation of epidemiological surveillance of vaccine preventable diseases (ongoing)
- Support safe waste management: collection; storage; and final disposition (ongoing)

All these activities have been undertaken aiming at strengthening/(re)building leadership and capacities at the Ministry of Health/Direction of EPI and in close collaboration with UNICEF.

2) Activities aiming at mitigating consequences of earth quake on routine EPI activities:

- Support the second turn of universal tetanus vaccination in Gonaives municipality is being implemented with support of Cuban Medical Brigade
- Elaboration of the 2010 program budget of EPI direction and Departmental Direction of Health and consolidation of its funding with UNICEF

Results

Preliminary results are presented in page 3. Taking in consideration data not already reported/entered, we can consider that more than 400 000 peoples have already benefited from the phase 1 of the Plan of vaccination post disaster. The analysis of administrative and monitoring coverage data by settlement sites shows : 1) over estimation of the population in many sites (33% overestimation in average) ; and 2) in some sites a number of unvaccinated which must be addressed through catchment strategies (see perspectives)

Perspectives

1) With regard to Post disaster activities:

- Phase 1 (i.e. vaccination in settlements sites) should be completed around mid April
- Implementation of catch up strategies (as soon as a given municipality has vaccinated in all its settlements sites):
 - In big sites where there is an important number of unvaccinated individuals, a second opportunity should be offered, with intense social mobilization and, in case of high number of unvaccinated adults, selection of hours and/or days suitable for these category of persons (e.g. late in the day and/or week end)
 - For smaller sites/accumulations of unvaccinated, the catch up will be made by vaccination teams positioned in sites distributed evenly in the municipalities.

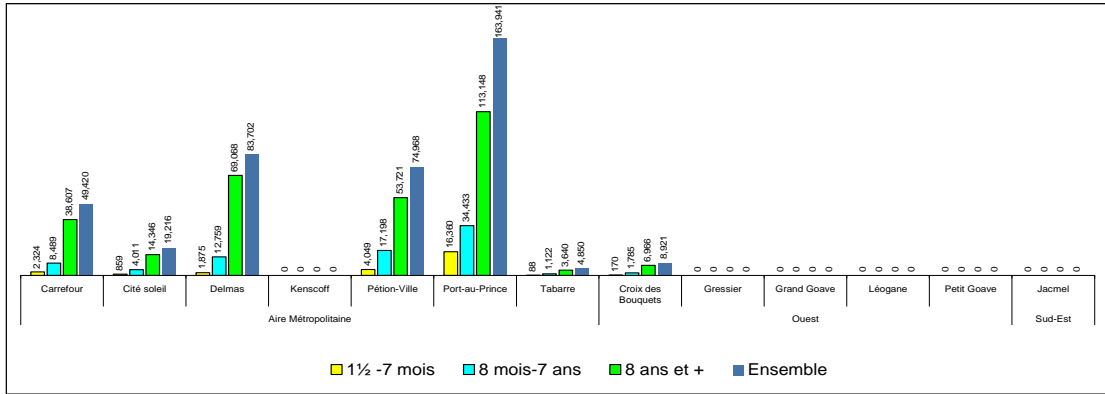
2) With regard to routine EPI Activities:

- Finalization of central and departmental budget of routine EPI and consolidation of its funding with UNICEF
- Elaboration of a Letter Of Agreement encompassing all activities of the central and departmental level funded by PAHO for 2010
- Support and follow up of the execution of the activities of central and departmental level
- Adaptation (to post disaster situation) and validation of EPI Multi year Strategic Plan

ADMINISTRATIVE RESULTS

DONNES DISPONIBLES AU		20-Mar-2010		NOMBRE DE VACCINES				COUVERTURE ADMINISTRATIVE			
LOCALISATION		SITES		1½ -7 mois	8 mois-7 ans	8 ans et +	ENSEMBLE	1½ -7 mois	8 mois-7 ans	8 ans et +	ENSEMBLE
DEPARTEMENT	COMMUNE	#	POPULATION					1.86%	15.71%	82.43%	100.00%
		190	703,507	25,725	79,797	299,496	405,018	197%	72%	52%	58%
Aire Métropolitaine	Carrefour	23	74,661	2,324	8,489	38,607	49,420	167%	72%	63%	66%
	Cité soleil	7	21,600	859	4,011	14,346	19,216	214%	118%	81%	89%
	Delmas	29	174,125	1,875	12,759	69,068	83,702	58%	47%	48%	48%
	Kenscoff	0	0	0	0	0	0	0%	0%	0%	0%
	Pétion-Ville	23	166,600	4,049	17,198	53,721	74,968	131%	66%	39%	45%
	Port-au-Prince	97	243,953	16,360	34,433	113,148	163,941	361%	90%	56%	67%
	Tabarre	4	5,768	88	1,122	3,640	4,850	82%	124%	77%	84%
Ouest	Croix des Bouquets	7	16,800	170	1,785	6,966	8,921	54%	68%	50%	53%
	Gressier	0	0	0	0	0	0	0%	0%	0%	0%
	Grand Goave	0	0	0	0	0	0	0%	0%	0%	0%
	Léogane	0	0	0	0	0	0	0%	0%	0%	0%
	Petit Goave	0	0	0	0	0	0	0%	0%	0%	0%
Sud-Est	Jacmel	0	0	0	0	0	0	0%	0%	0%	0%

EFFECTIFS



MONITORING RESULTS

